

Good Practice Manufacturer / Supplier

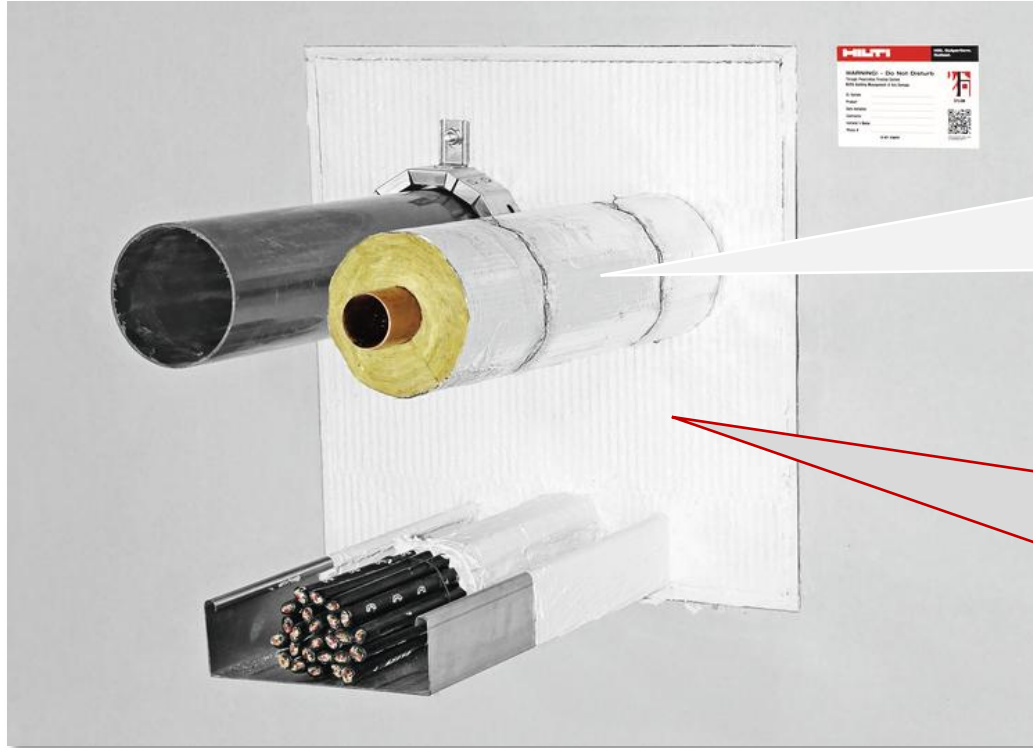
Case study:

Passive Firestop Building Products

Dr Martin Stirling



Passive Firestop Building Products limit the spread of fire through service penetrations



'Services' need to penetrate building elements (walls & floors)

Pipes (Plumbing / HVAC / Sprinklers)
Cables (Electricity / Data / Dry Fire)

Passive firestop products preserve the integrity of walls and floors + insulate them
Use the chemical characteristic of 'intumescence' to close gaps under heat and prevent spread of fire when service elements collapse.
Use the chemical characteristic of 'charring' to insulate and prevent temperature rise.

They also limit fire spreading through joints, gaps & cavities

Construction joints

Tops and bottoms of walls intersect with floors, so there is naturally a small gap.



Passive firestop products seal the gaps

Passive firestop products seal the gap and preserve integrity.

Use the chemical characteristic of 'charring' to insulate and prevent temperature rise.

Gaps and Cavities

Curtain Wall Façades cross floor slabs, so there is naturally a gap.
Ventilated Façades cover exterior walls, so there is naturally a cavity.



Passive firestop products seal the gaps

Passive firestop products char to maintain insulation.

Passive firestop products intumesce to rapidly close off the cavity.

The NCC's Passive Firestop compliance requirements need to be more explicit

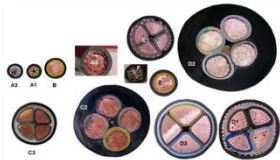
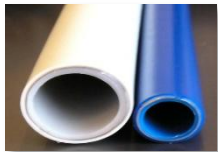


C4D15 requires the service, building element and any protection method at the penetration is **identical** with a prototype assembly tested in an **AS 1530.4** furnace test, or **differ** in accordance with **#4** of **AS 4072.1** assessment method

Conformance is clear, but true **Compliance is only inferred**. It needs to be explicit.

Allowable differences

- Metal pipes
- Cables
- Plastic pipes
- Control joint geometry
- Penetration services
- Multiple penetration systems.



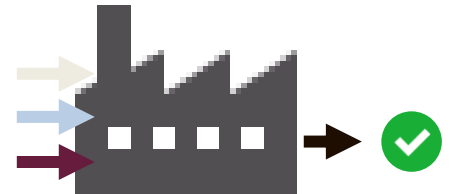
Needs to be truly identical

The passive firestop product



Ensuring 'identical'

It implies 'compliance', or "conformance throughout life"



Industry uptake of true compliance



C4D15 requires the service, building element and any protection method at the penetration is **identical** with a prototype assembly tested in an **AS 1530.4 furnace test**, or **differ** in accordance with **#4 of AS 4072.1** assessment method.

Passive Fire Protection products used in prototype assemblies require **ongoing surveillance** according to **ISO Guide 28**.

Certifiers

Do not always understand true compliance i.e. conformance + ongoing product production surveillance.

Have a natural cynicism for any new evidence of suitability documentation due to the amount of questionable EoS they need to review.

Do not understand the difference between JASANZ and NATA, nor why JASANZ is required.

Principal Contractors

Will only act when something is explicit in the NCC, or a Performance Solution demands it.
Defer 100% to certifiers / engineers.

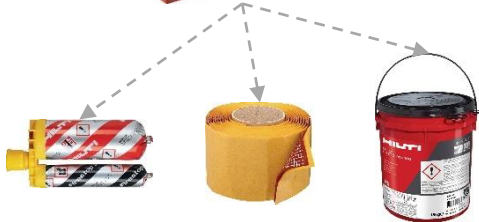
Sub-Contractors

Defer 100% to certifiers / engineers.

Additional **BPIC** action points - Online information

Products - Firestop

- 8 sub-categories
- Dimensions
- Document links
- Features & applications
- Related products
- Consulting & support



Documents

- EPD (LCA)
- Third Party Certified Conformance
- Product brochure
- VOC Certificate
- Operating instruction



Consulting & Support

- Multi-channel
- Transactional
- Contractor (DtS)
- Engineer (Performance Solution)

Request live Product Demo
Would you like an interactive demonstration of this product? Meet one of our product experts for a free and hands-on presentation.

Start live chat
Use this instant messaging tool to get easy and quick access to our Customer Service team. This service is available during business hours 7:30 AM - 5:00 PM.

Request call back
Let us call you back and connect you with one of our competent Hill advisors. You will be contacted within a couple of minutes during business hours 7:30am - 5pm AEST.




Compliance Level

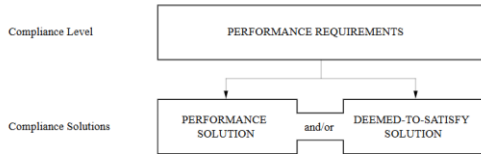


Compliance Solutions

Training Hilti people to support the products in application

Consulting & Support
 Multi-channel
 Transactional
 Contractor (DtS)
 Engineer (Performance Solution)

| | | |
|---|--|---|
|  <p>Request live Product Demo</p> <p>Would you like an interactive demonstration of this product? Meet one of our product experts for a free and hands-on presentation.</p> |  <p>Start live chat</p> <p>Use this instant messaging tool to get easy and quick access to our Customer Service team. This service is available during business hours 7:30 AM - 5:00 PM.</p> |  <p>Request call back</p> <p>Let us call you back and connect you with one of our competent Hilti advisors. You will be contacted within a couple of minutes during business hours 7:30am - 5pm AEST.</p> |
|---|--|---|



Customer Service
 Online training



Hilti Store Representatives
 Online training +
 2-week hands-on
 training at
 Regional Training
 Center (K-L)



Account Managers
 Online training +
 2-week hands-on
 training at
 Regional Training
 Center (K-L)



Field Engineers
 Online training +
 2-week hands-on
 training at
 Regional Training
 Center (K-L)



BPIC Manufacturer / Supplier action point status quo

1. Control process for creating prod info



2. Control process for product info



3. Clarity & Reality



4. Compliance & Conformance



ISO Guide 28 ongoing product surveillance

5. Conformance



6. Clear webpage – product attributes



7. Documentation of any product changes



8. Clear webpage – product in action



9. Warranty (#5 General terms and conditions of purchase)



10. Helpline



11. Technically competent people



12. Provide 1-11 inclusive



Thankyou!

Dr Martin Stirling

martin.stirling@hilti.com

